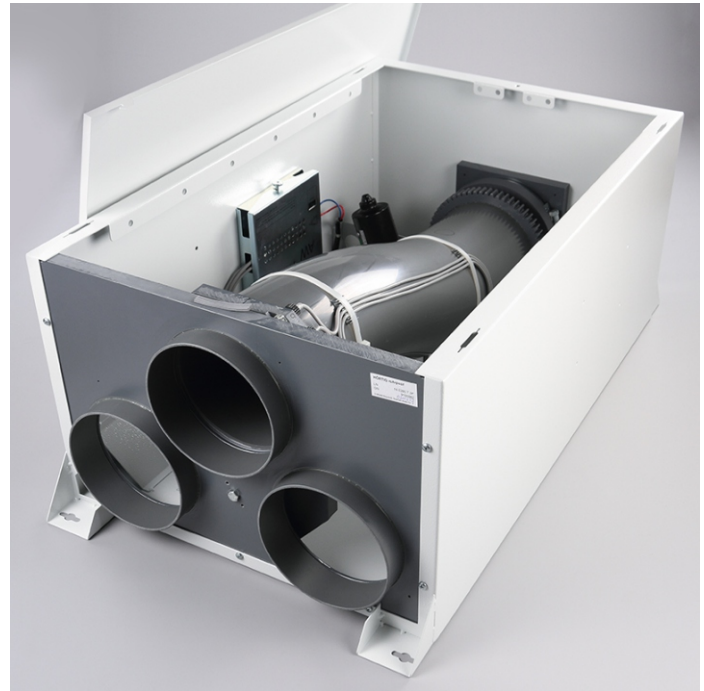


1.0395.T.0F / 1.0395.V.0F

Diverter 3-Way with AW H61F



Diverter 1.0395.T.0F

Characteristics

- Can be used as 2- or 3-way diverter
- S-bend (swivel tube) construction
- Hall position sensor controlled safe snap of the swivel tube into correct positions
- All functions can be checked directly at the diverter
- Absolutely suction and pressure tight
- Suitable for carriers up to 420 mm
- MTBF 8 years

Installation/Service

- Installation in any direction
- Easy service when installed in ceiling
- Aligns perfectly within minutes during reassembly

Technical properties

Material: Sheet-steel case, plastic-covered, with PVC and ABS parts inside

Colour: Powder coated, white-grey, appr. RAL 7035

Tube: Do160 (1.0395.T.0F) / Do200 (1.0395.V.0F)

Housing:

1.0395.T.0F:

ca. 770 mm (h) × 500 mm (w) × 353 mm (d)

1.0395.V.0F:

ca. 1165 mm (h) × 606 mm (w) × 442 mm (d)

Weight:

1.0395.T.0F: ca. 28 kg

1.0395.V.0F: ca. 58 kg

Delivery Scope

- Including AW control unit

We reserve the right of changes!