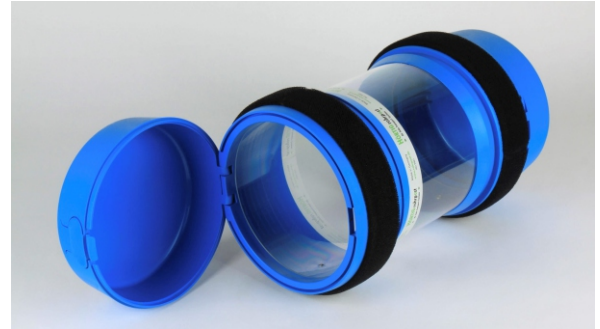


1.9352.V.00

Carrier Two Flip Lids



Loading capacity: 154 mm × 350 mm

Weight: 1.4544 kg

Material: Plastic

Colour: Blue

Opening on both sides: Yes

With:

- High-grade velcro rings
- Two flip lids

For:

- Tube dimension Do200
- Bend radius $r = 800$ mm or bigger

We reserve the right of changes!