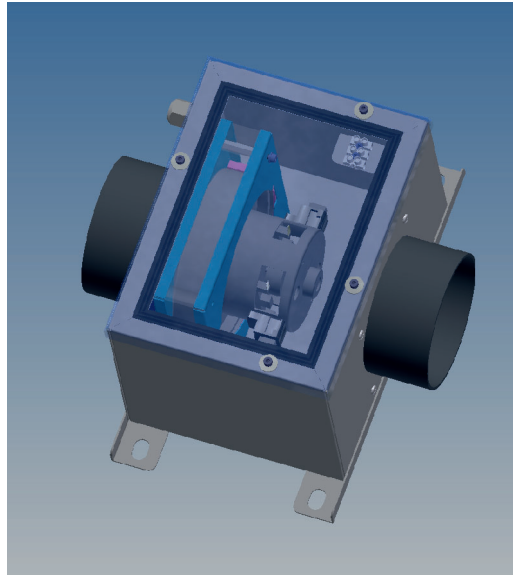


1.2023.6.00

Single Blower 230 V



Blower Unit 1.2023.6.00

Characteristics

- Max. 2000 l/min
- Max. 110 mbar
- 230 V
- 50 Hz
- With one motor for suck-air / pressure-air
– 1 × 1100 W (1.2023.6.00)
- With power cord 230 V and 3-wires

Installation

- At wall, at ceiling, or at bottom

Dimensions

Flange diameter: Do110

Housing: appr. 310 mm (w) × 184 mm (h) × 176 mm (l)

Delivery Scope

- contains Air Tube Connection Set

We reserve the right of changes!