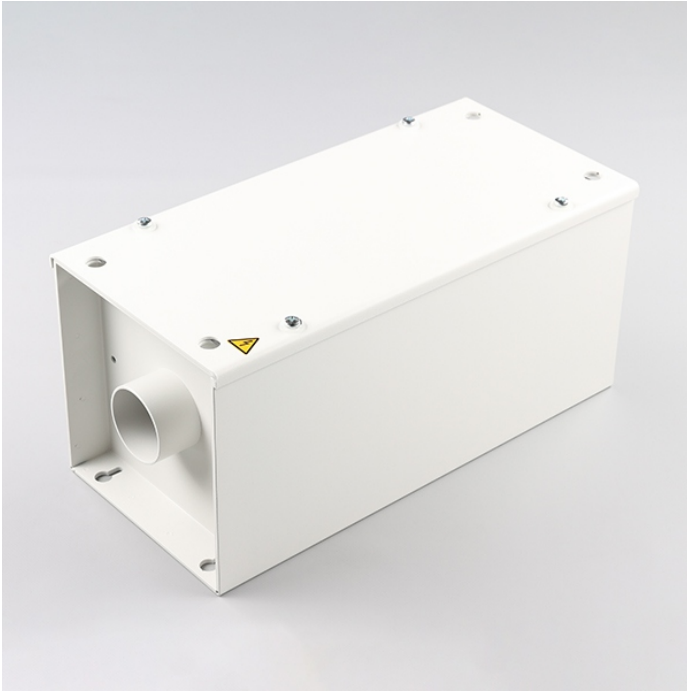


1.2023.2.00 / 1.2053.2.00 / 1.2023.2.50

## Blower Unit 230 V / Air Tube Connection Set



Blower Unit 1.2023.2.00



Air Tube Connection Set 1.2023.2.50

### **Blower Unit 1.2023.2.00 / 1.2053.2.00**

#### **Characteristics**

- Max. 2000 l/min
- Max. 110 mbar
- 230 V
- 50 Hz
- 1kW
- With one motor for suck-air / pressure-air  
– 1 × 1100 W (1.2023.2.00)
- With two motors for suck-air / pressure-air  
– 2 × 1100 W (1.2053.2.00)

#### **Installation**

- At wall, at ceiling, or at bottom

#### **Dimensions**

Flange diameter: Do63

Housing: appr. 435 mm × 210 mm × 205 mm

#### **Accessories**

- Air Tube Connection Set 1.2023.2.50

### **Air Tube Connection Set 1.2023.2.50**

#### **For**

- Connecting the blower unit 1.2023.2.00/1.2053.2.00 to the system (with one air tube connection set installed)
- Connecting the blower unit 1.2023.2.00/1.2053.2.00 to air source/sink (with two air tube connection sets installed)

#### **Characteristics**

- Vibration absorbing rubber sleeve Do63
- Adaptor from 63 to 110 mm

#### **Dimensions**

Tube: for tube dimensions up to Do110

Length: 150 mm

We reserve the right of changes!