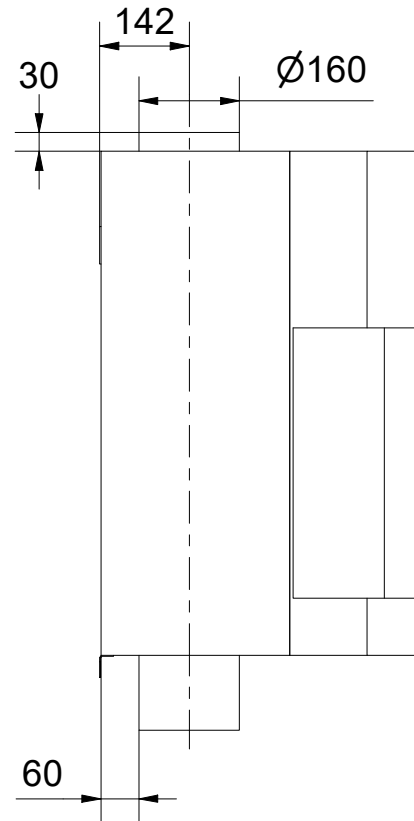
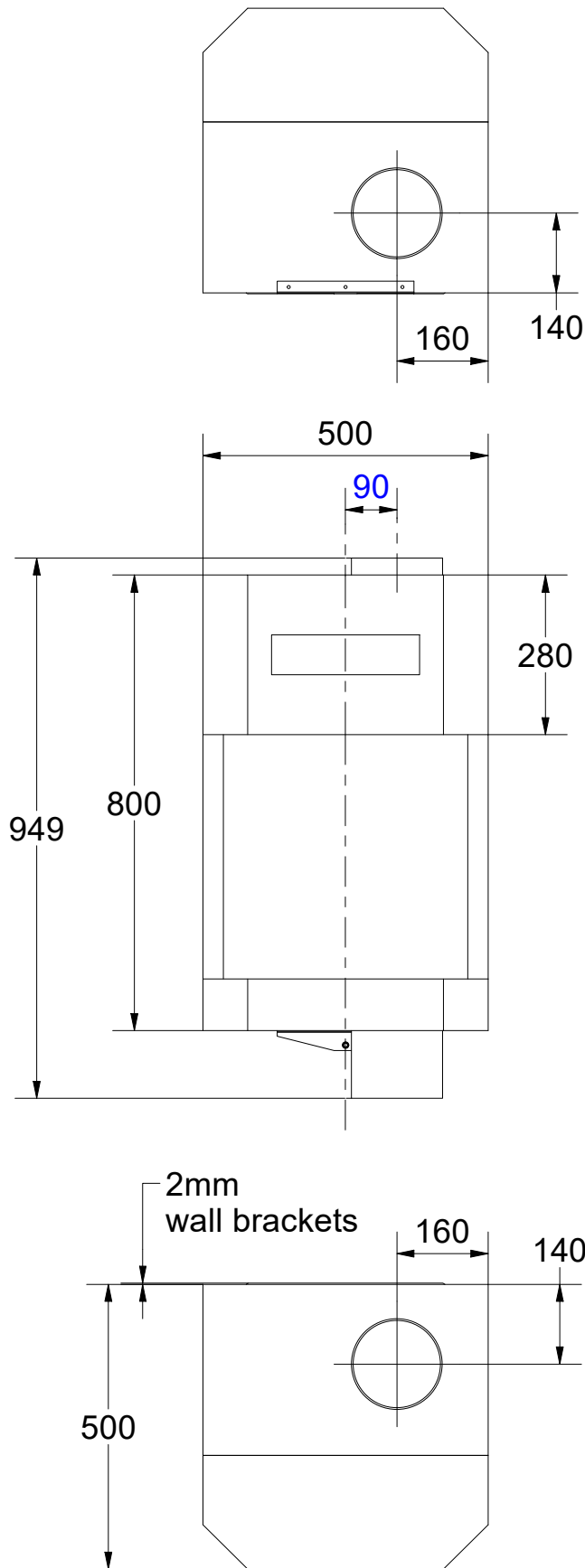
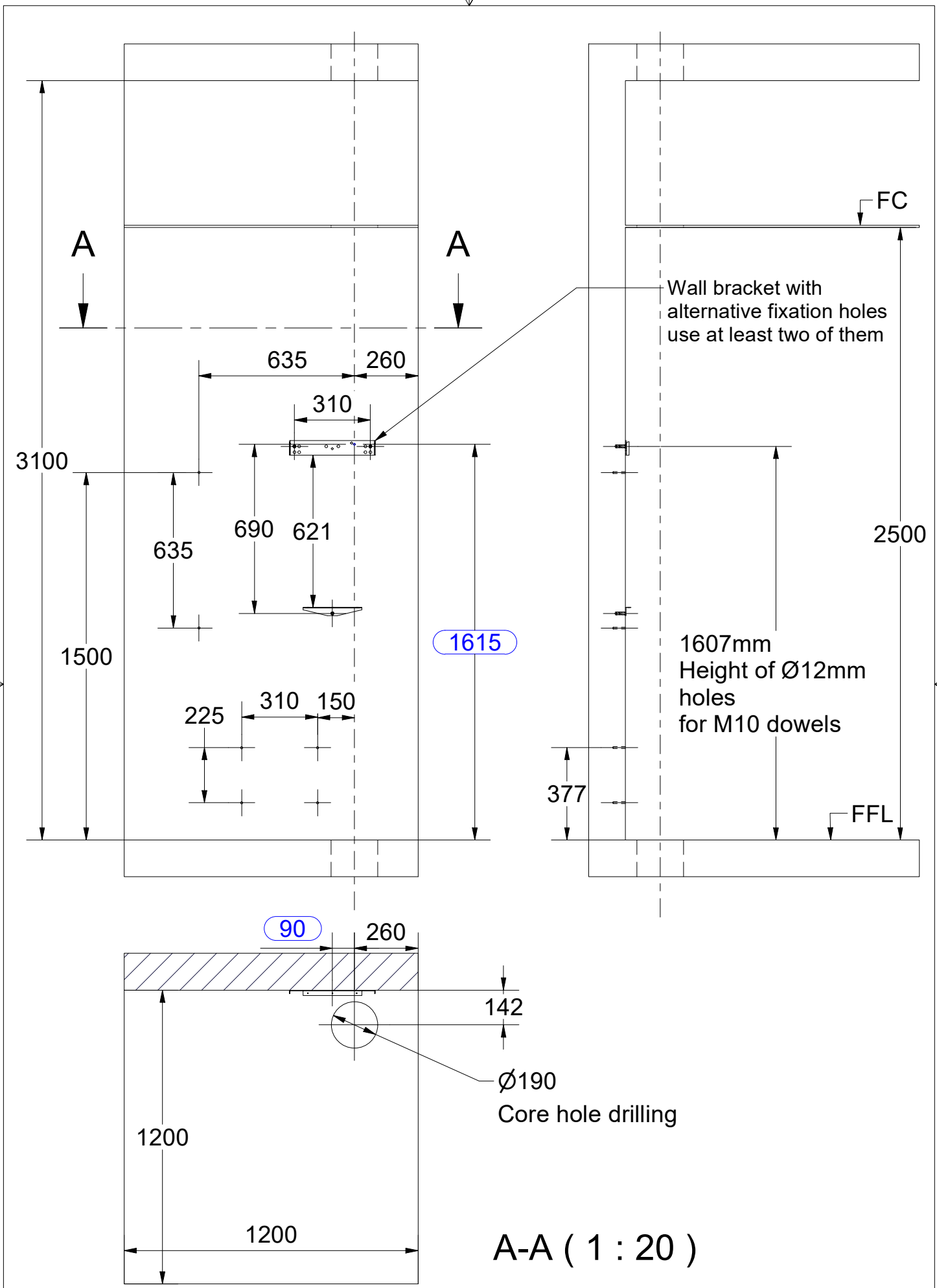
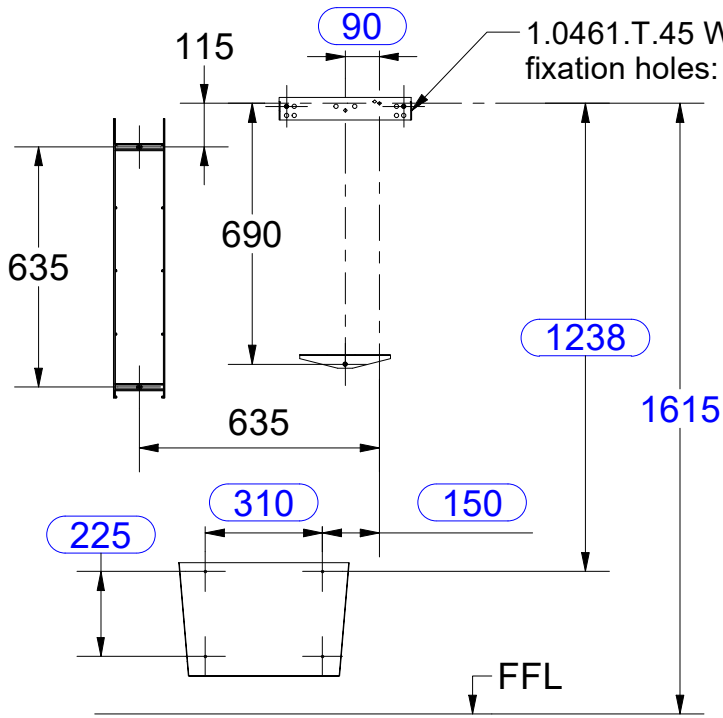


Valid for:
461_T_E
461_T_F

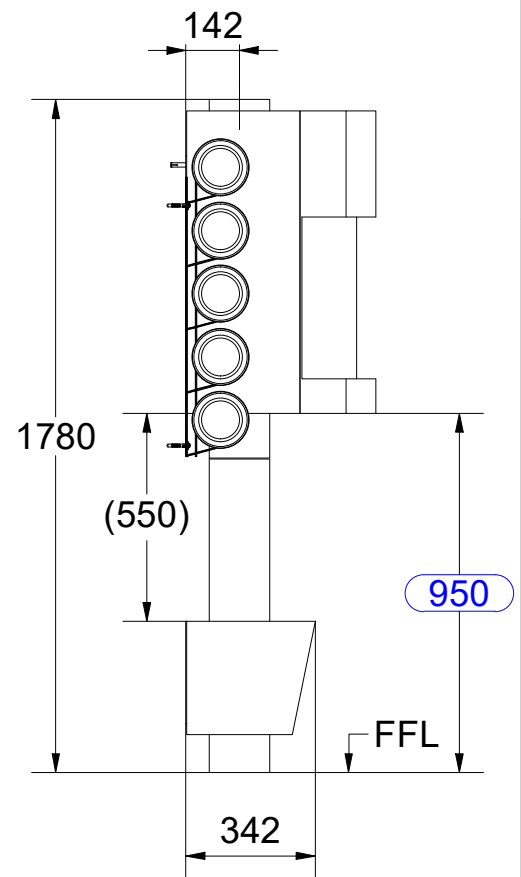
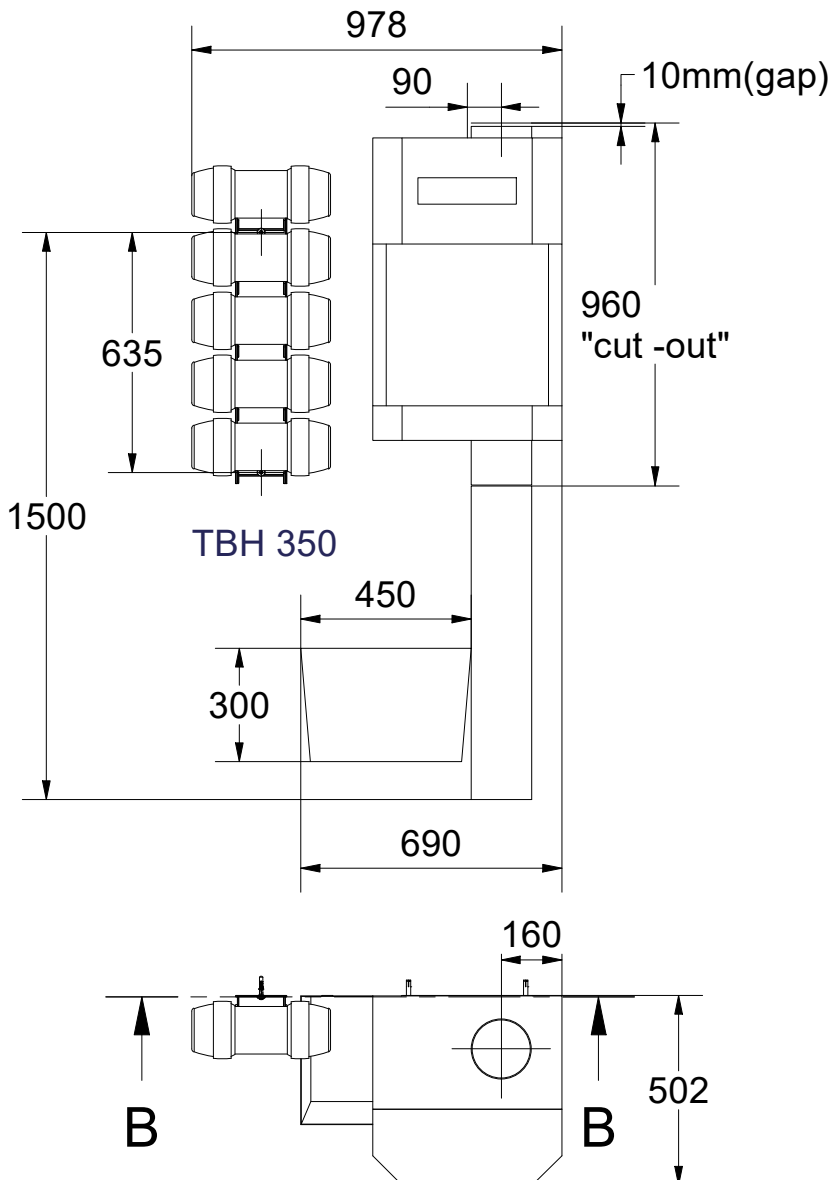


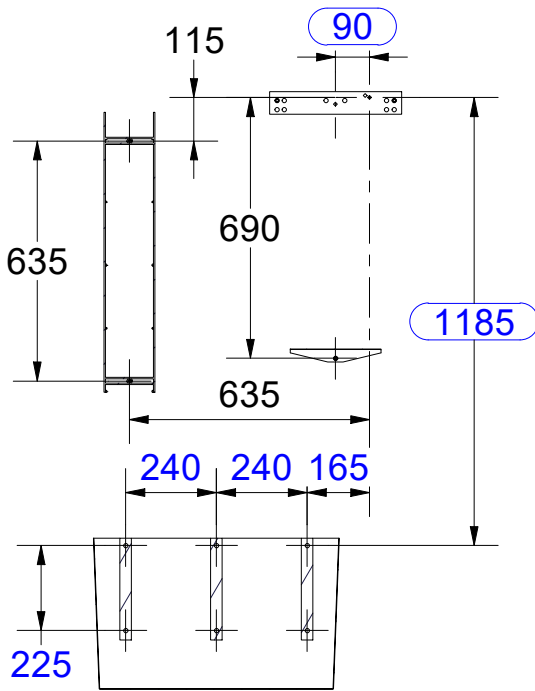
In the interest of continuous improvement and upgrade of our products Hörting reserves the right to change the technical specifications at any time, without prior notice.



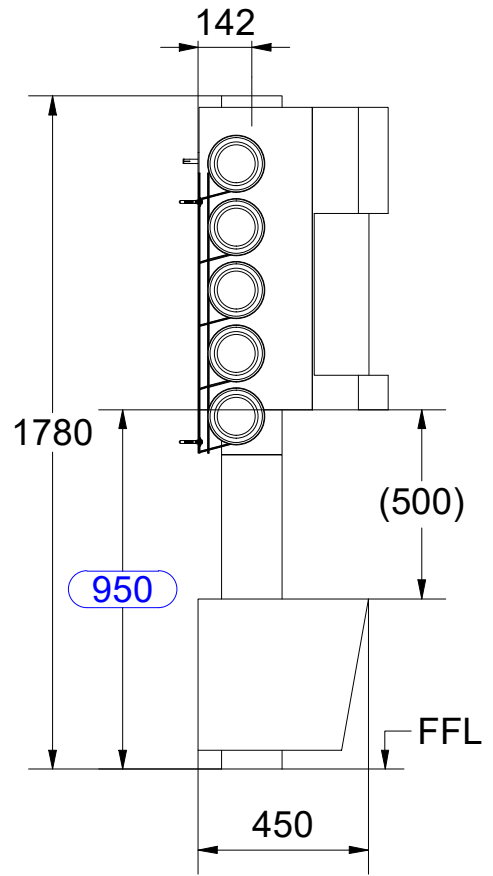
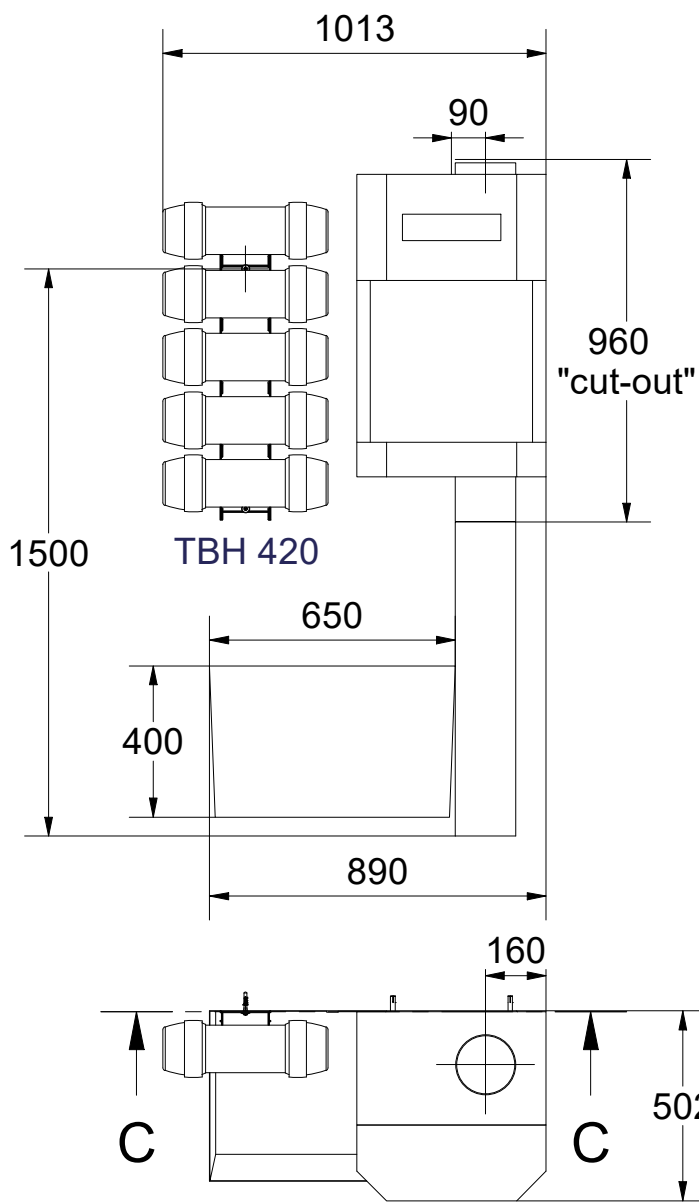


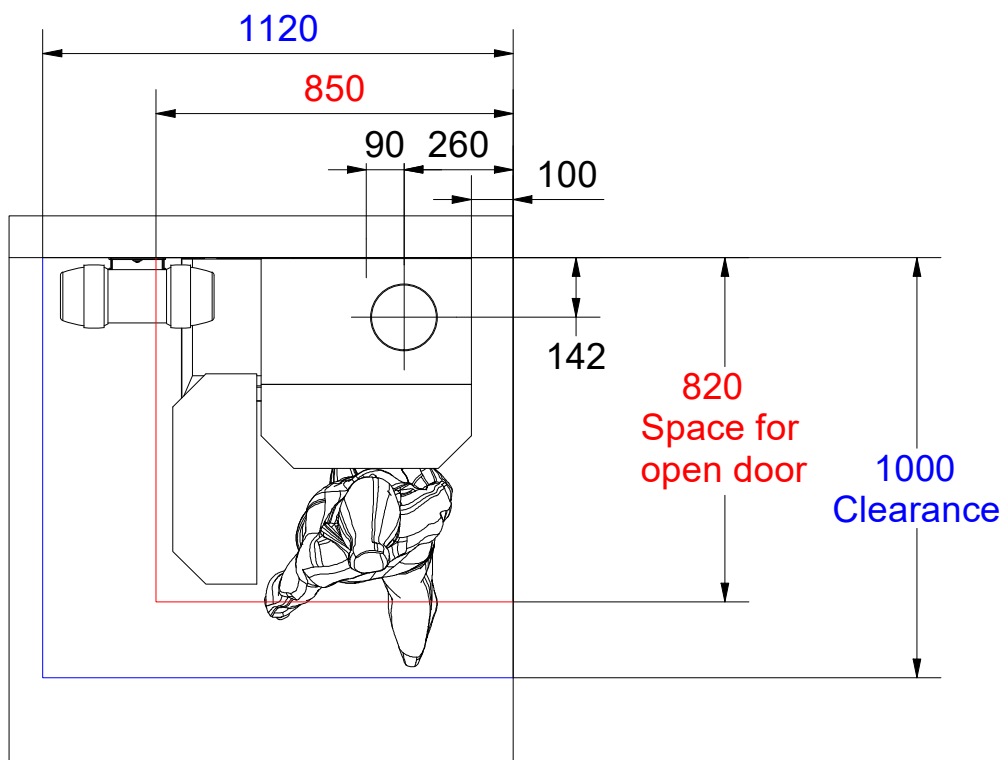
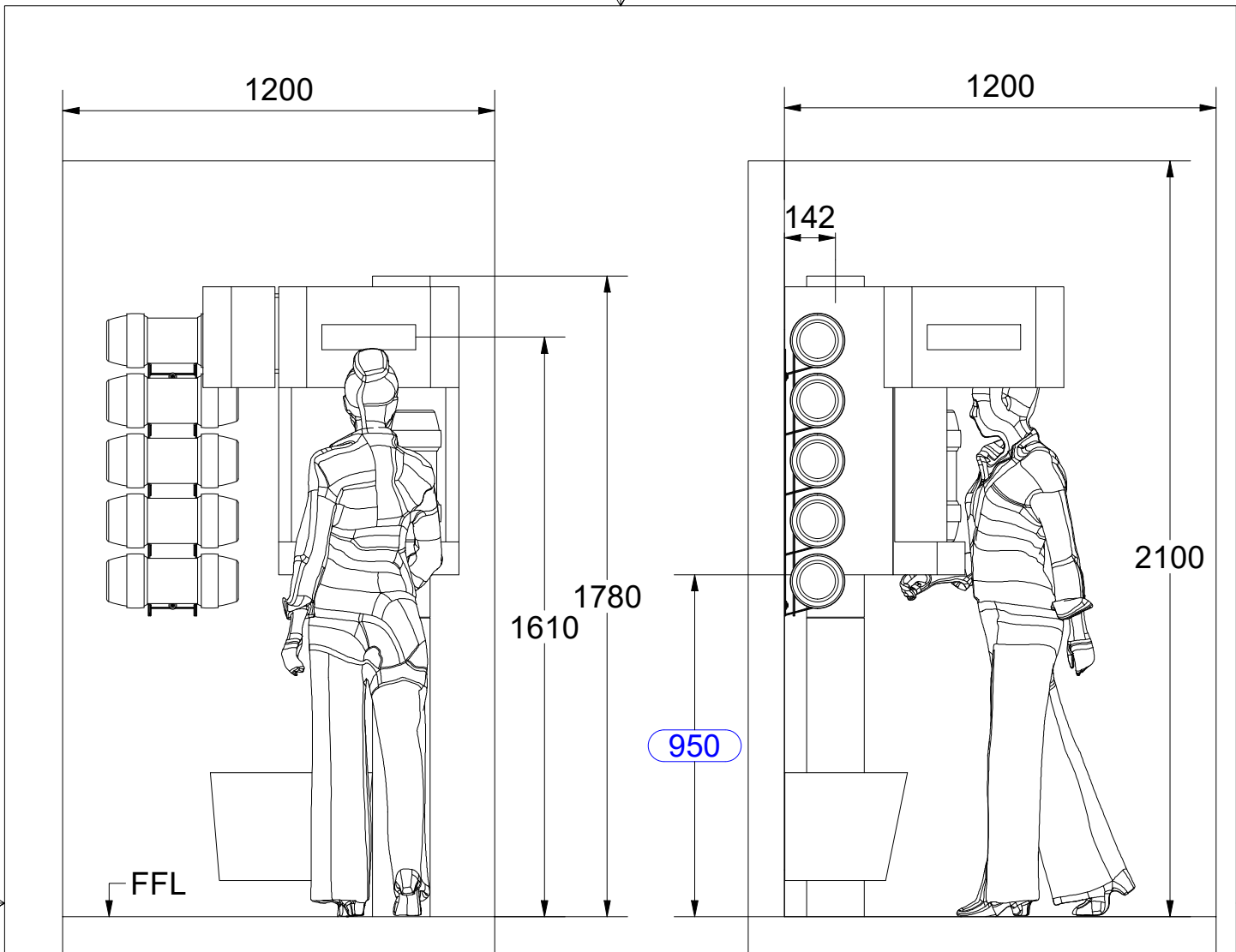
B-B (1 : 20)



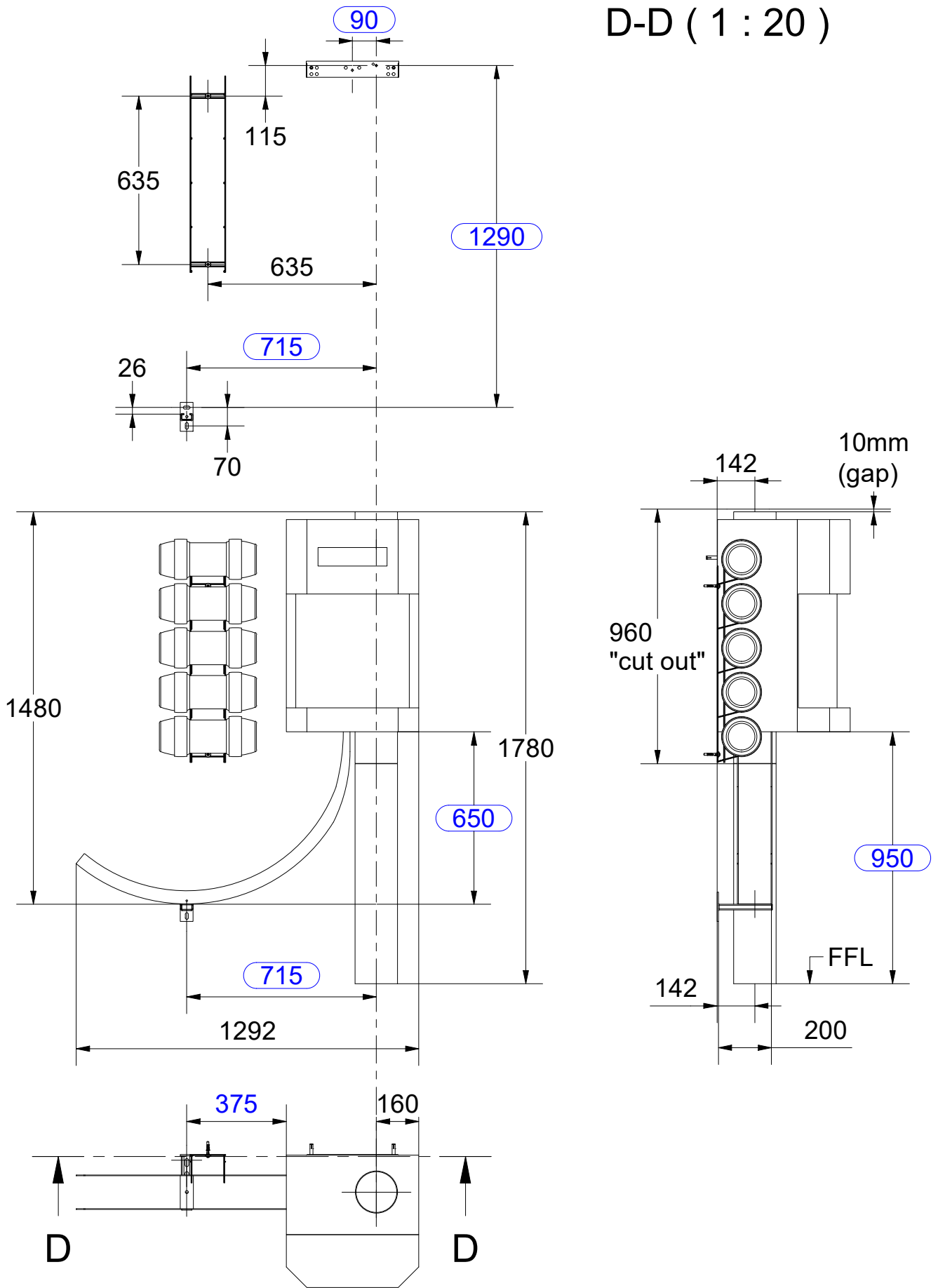


C-C (1 : 20)



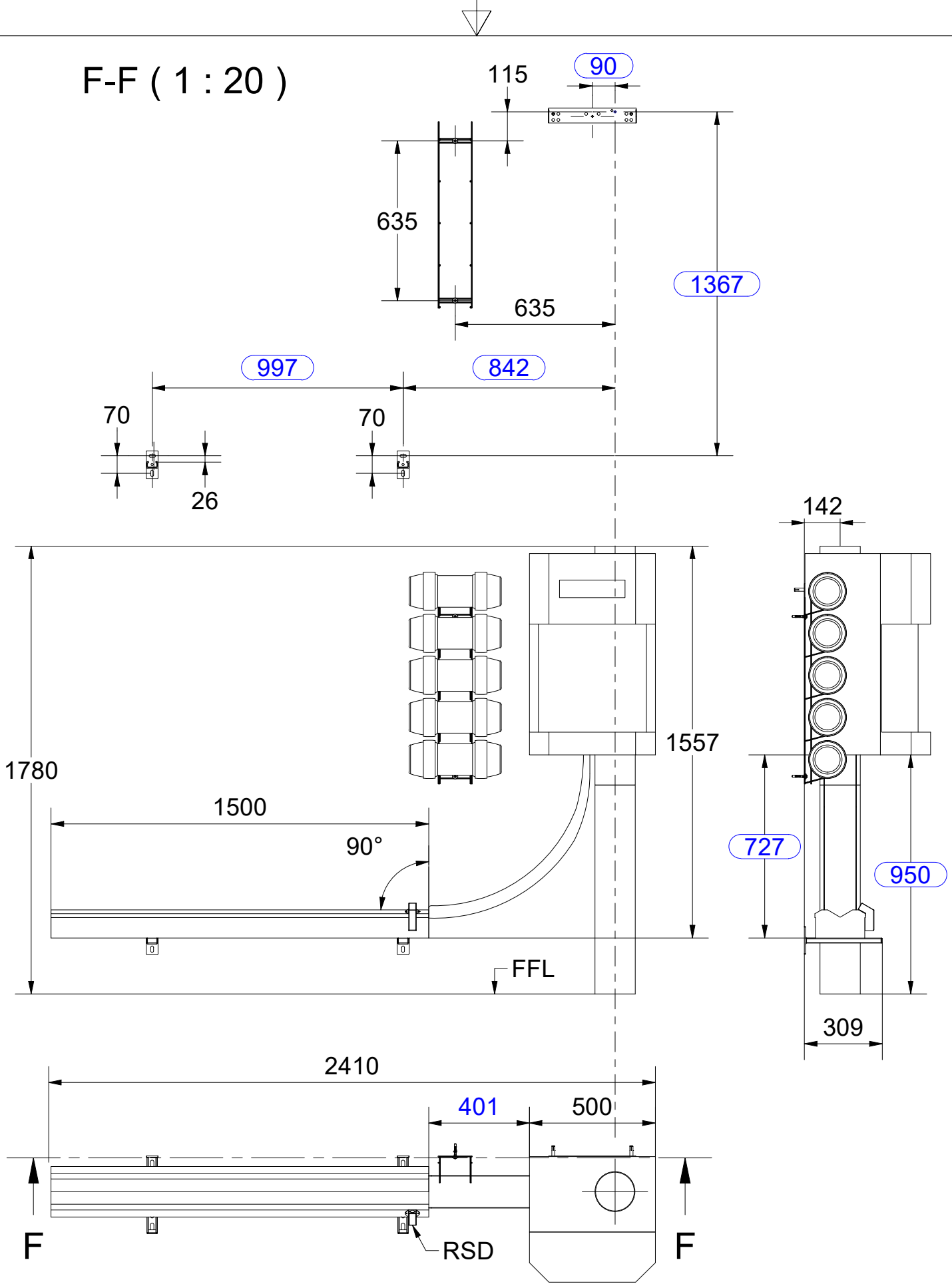


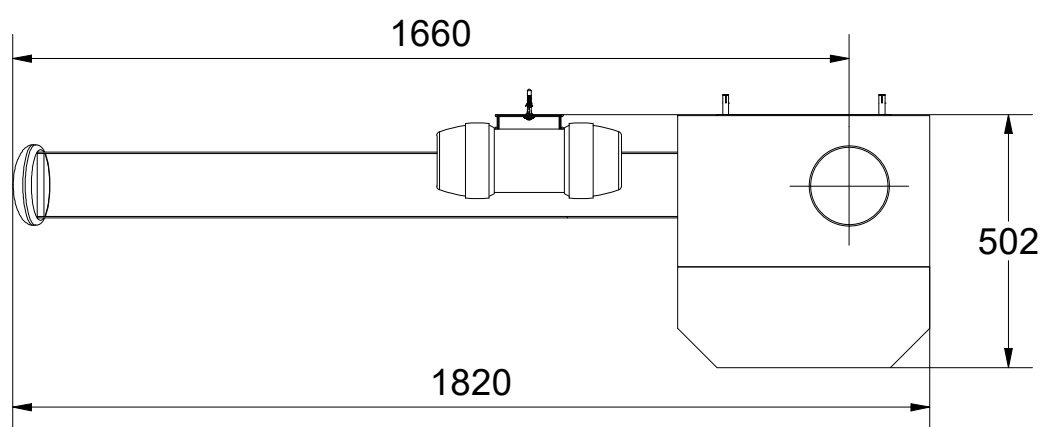
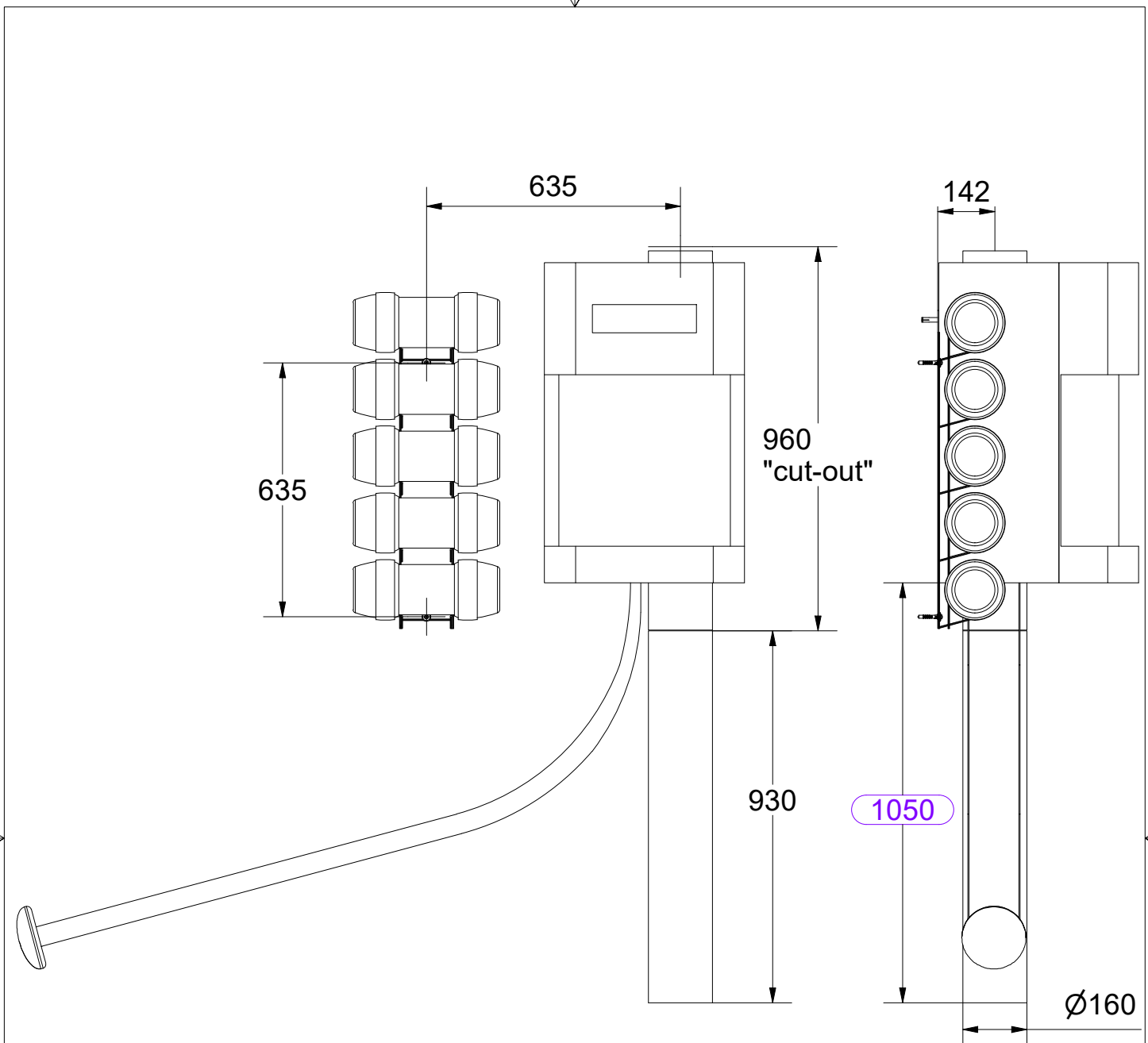
D-D (1 : 20)



Note: The reception bend can be installed in front of the station (rotated 90° counterclockwise)

F-F (1 : 20)

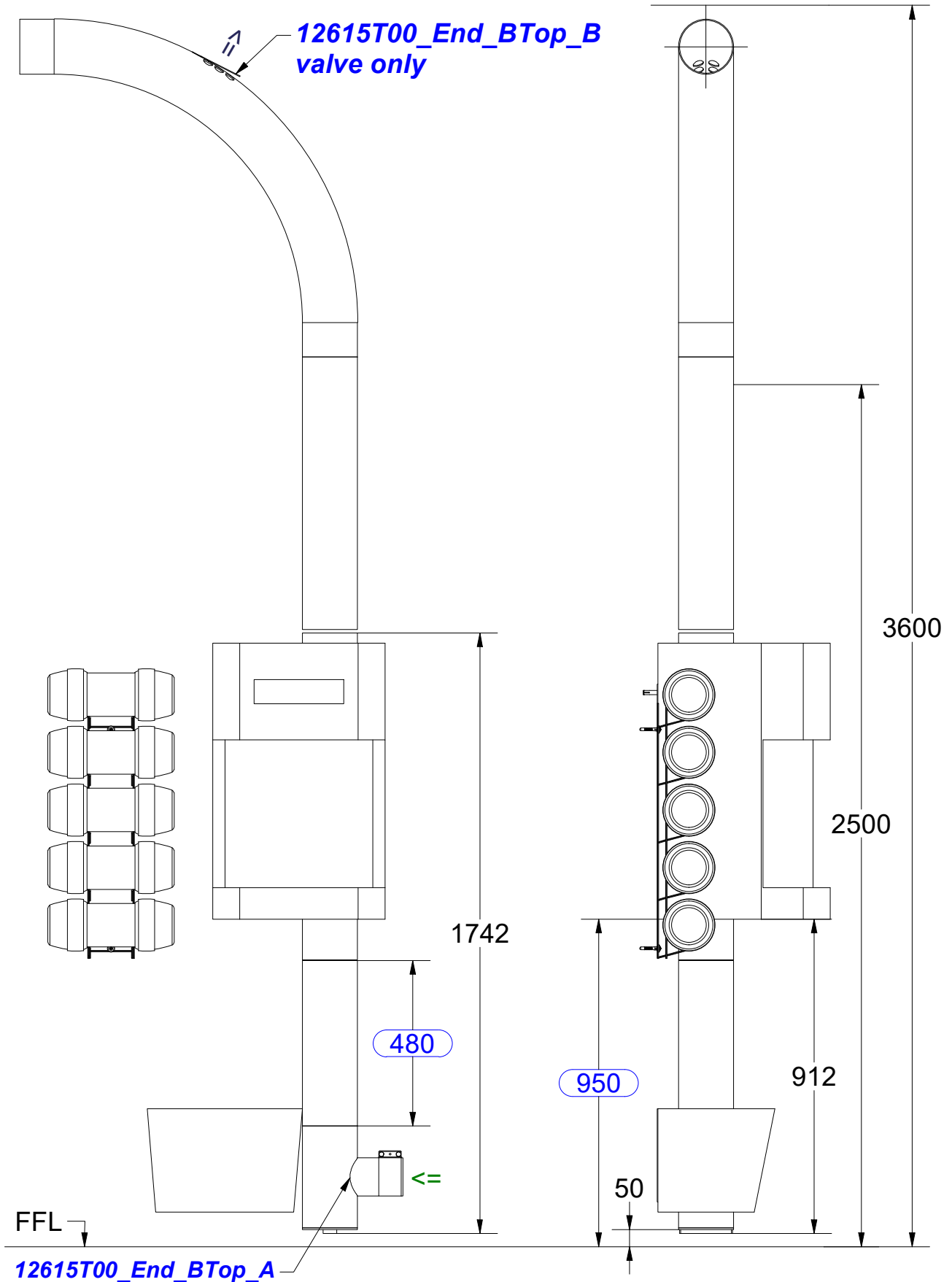




Wall penetration:
1615=>1715mm
Station height:
950=>1050mm

In the ramp application the wall bracket is mounted 100mm higher than the standard position (recommended).

461T end station / blower on top
 needs kit end by-pass: 12615T00 (12615T00_End_BTop_A + 12615T00_End_BTop_B)



**461T end station / blower on bottom
needs kit end cover: 10949T00_End_BBott**

**Kit end cover
10949T00_End_BBott**

Ø30 (10x) @ 360°
(2 rows)

500

950

1780

(550)

978

10852T02 (10852T02_Air_160_A+10852T02_Air_160_B)

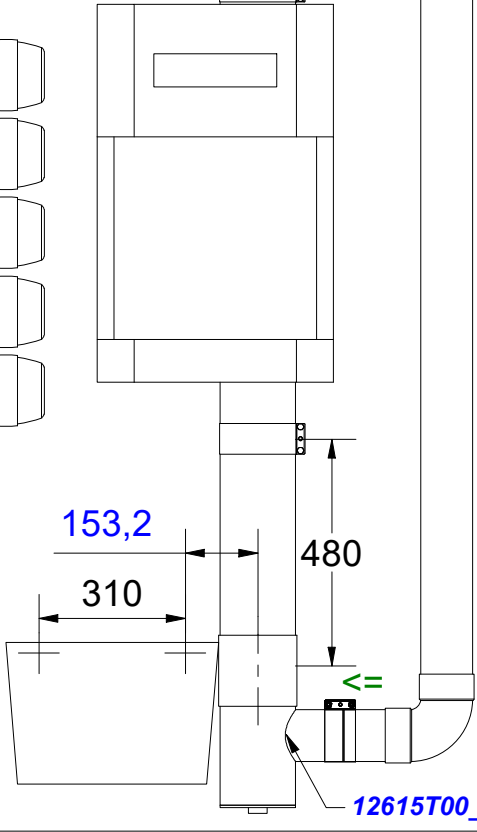
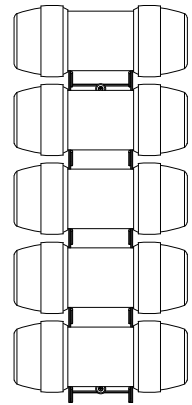
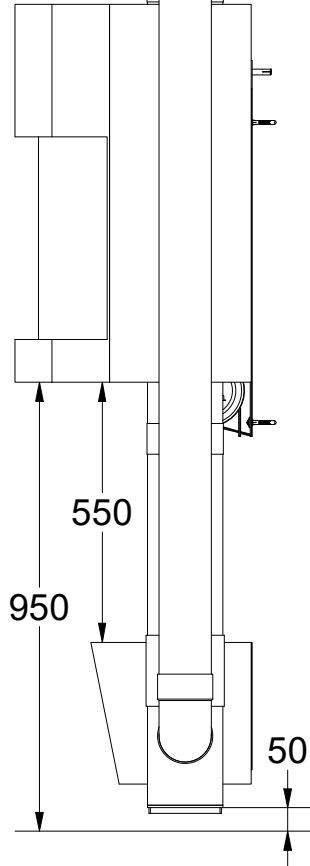
10852T02_Air_160_A
T-piece+NRV+Device sleeve

10852T02_Air_160_B
T-piece without bars

Exhaust
=>
Fresh air
intake
<=

16541600_Grille
Outside grille

400



FFL

